

She Said No

**Stefan Brüggemann - Gregor Hildebrandt
Jamie Shovlin - Conrad Ventur**

25th September - 14th November 2009





She Said No, Installation view



Gregor Hildebrandt, *Apart (Cure)*, 2009, Cassette tape on canvas, 209 x 209 cm



Jamie Shovlin, *Lustfaust: A Folk Anthology 1976-1981*, Simon Bird Collection 2003-2006, Pastel and chalk on paper, grey card mount and stamp, 19 x 26 cm (each)



(detail)



She Said No, Installation view



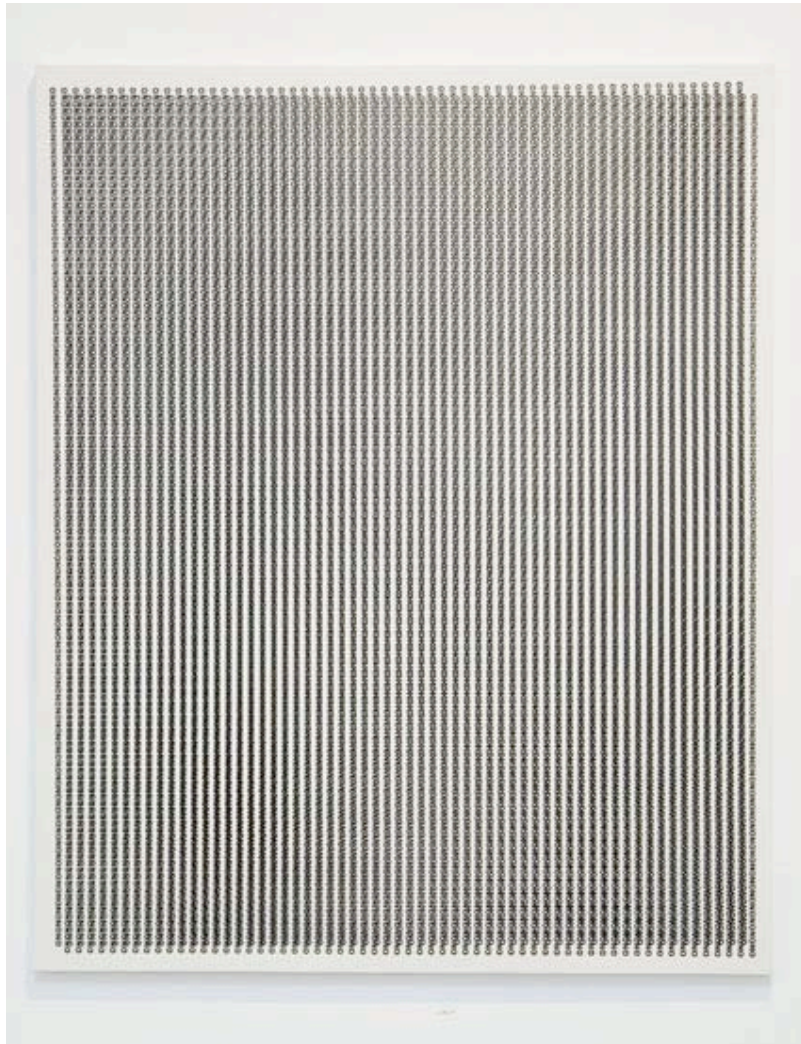
Stefan Brüggemann, Monument for the ceiling N. 1,
2009, White fluorescent light, 240 x 40 x 15 cm,
Unique



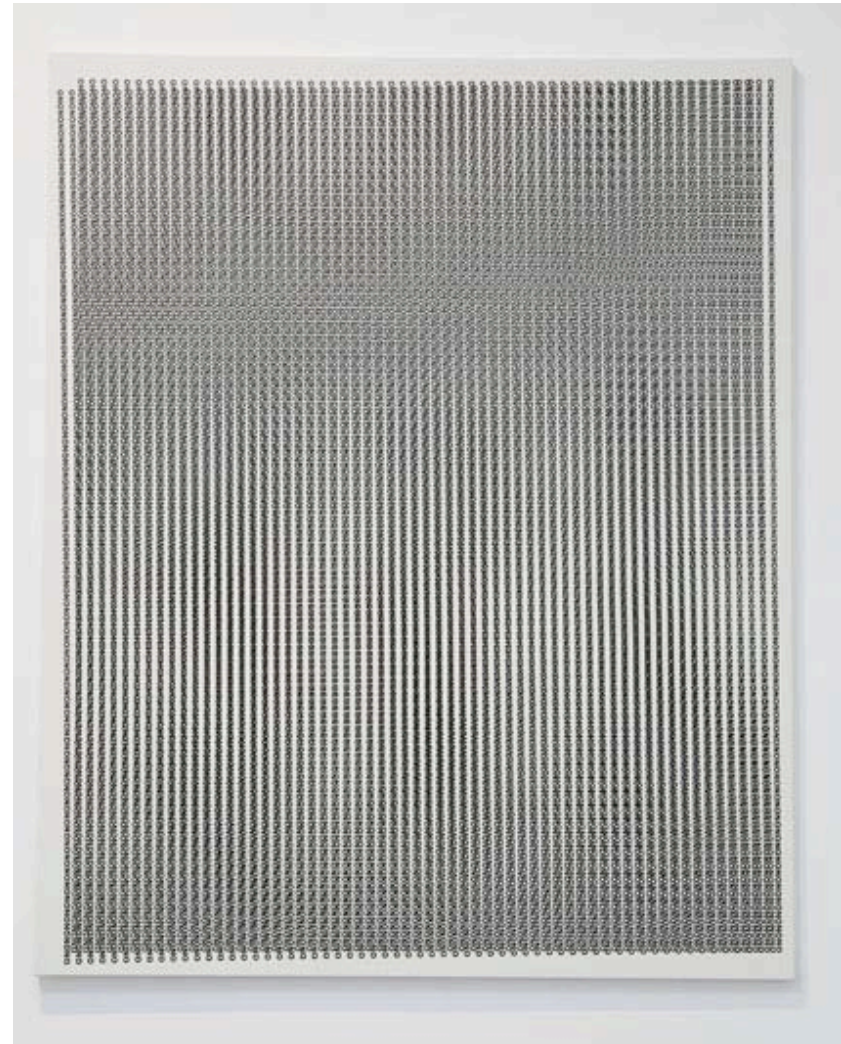
Gregor Hildebrandt, *Highschool love (Air)*, 2009, Cassette tape on inkjet print, 25,5 x 19,5 cm



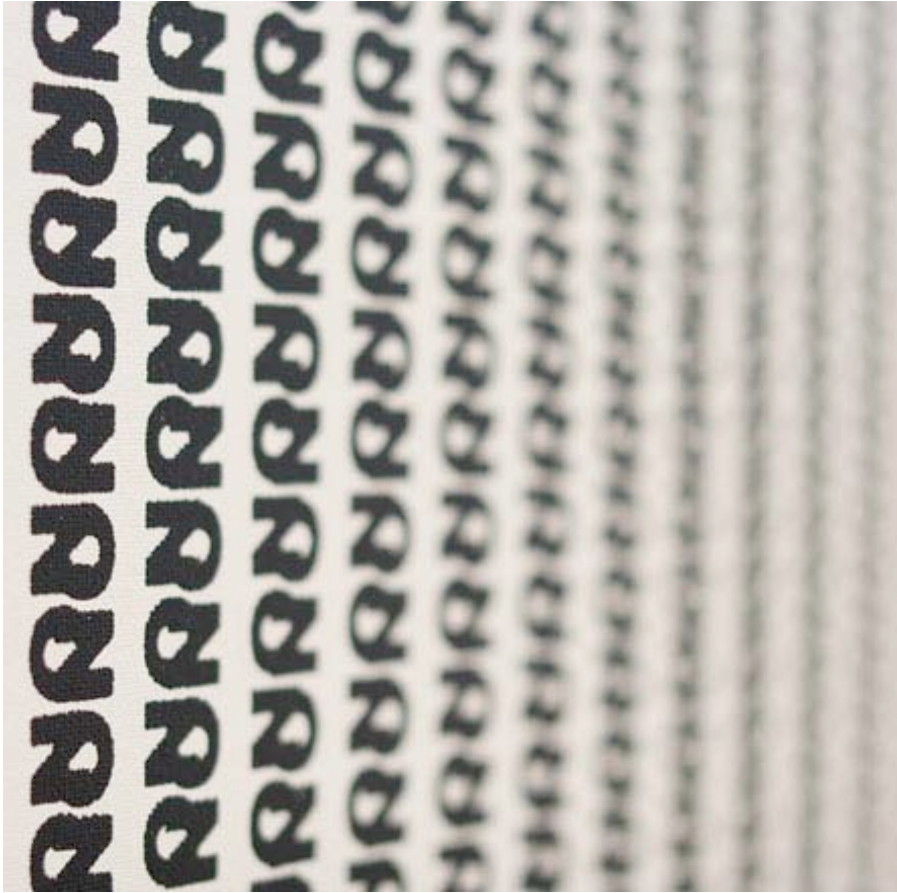
She Said No, Installation view



Stefan Brüggemann, No painting n. 1, 2009, Silkscreen on canvas, 180 x 130, Unique



Stefan Brüggemann, No painting n. 1, 2009, Silkscreen on canvas, 180 x 130, Unique



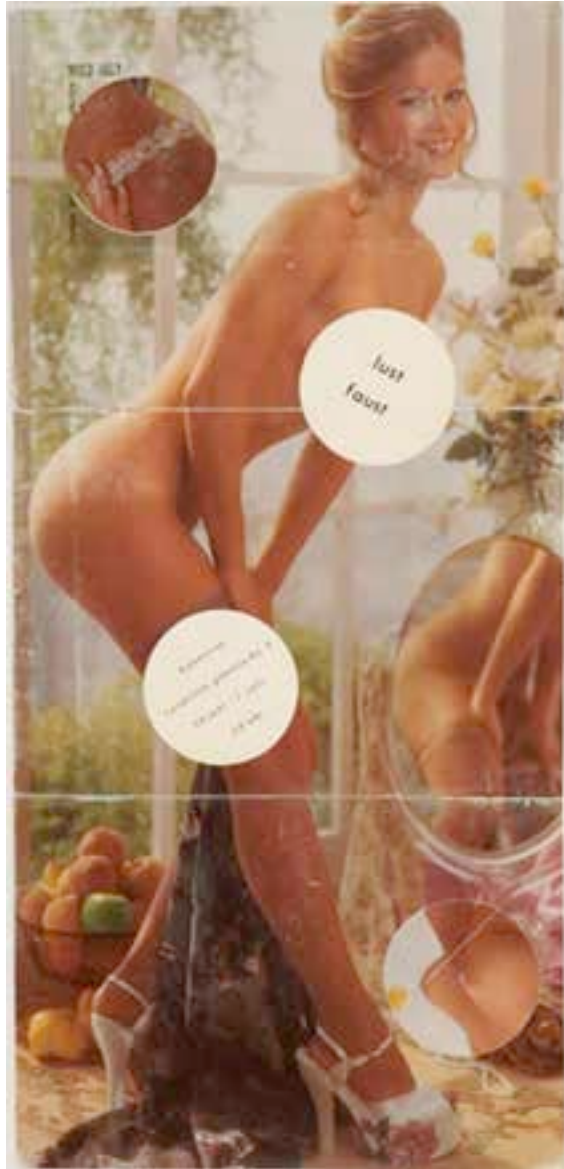
(detail)



Stefan Brüggemann, No in 12 different colours, 2009, Color neon, 140 x 145 cm, Unique

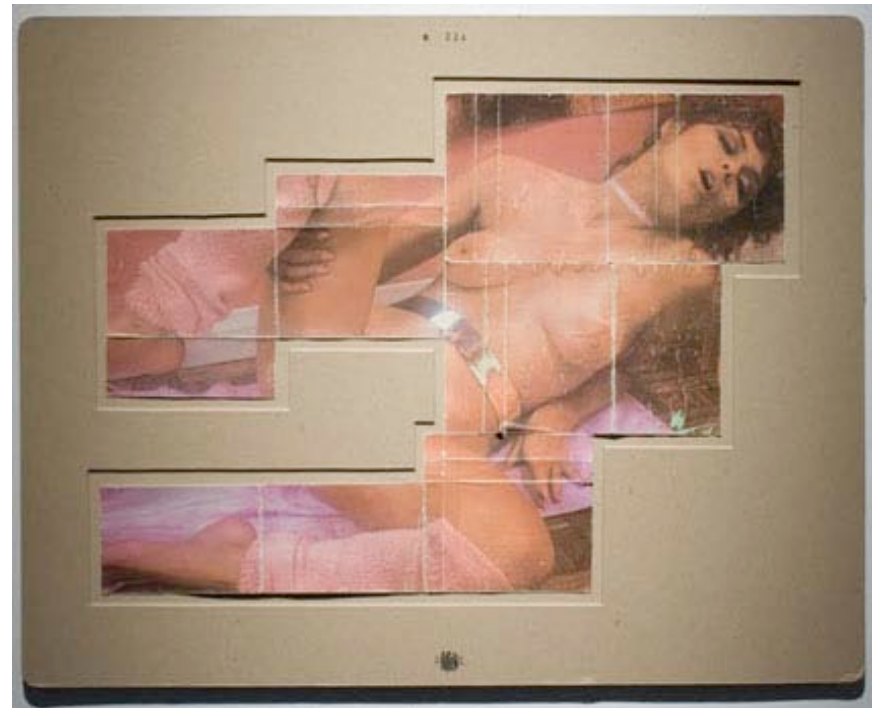


She Said No, Installation view



Jamie Shovlin, Klaus Schmidt, June 30-July 1, 1977, Hannover, 2008, Collage and leterset on paper, 59 x 28 cm

Jamie Shovlin, Lustfaust: A Folk Anthology 1976-1981, Paul Baron Collection 2003-2006, Collage and leterset on paper, grey card mount and stamp, 40 x 50 cm





She Said No, Installation view

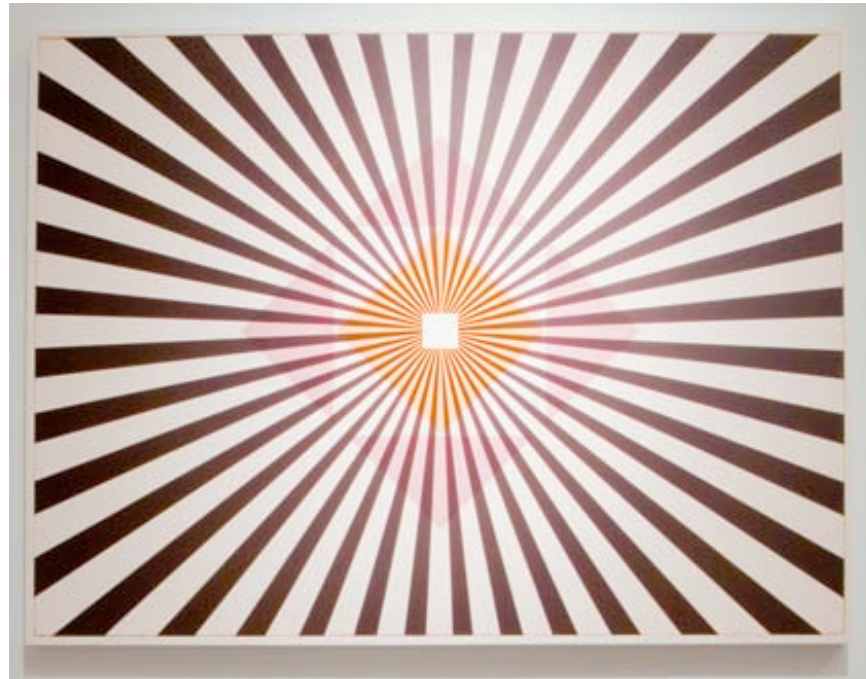
Conrad Ventur, Bang Bang [Nancy Sinatra live], 2009, 2'42" video for projection, continuous loop, rotating crystal pendant, Dimensions variable, (detail)



Conrad Ventur, Bang Bang [Nancy Sinatra live], 2009, 2'42" video for projection, continuous loop, rotating crystal pendant, Dimensions variable, (detail)



She Said No, Installation view



Conrad Ventur, Bang Bang, 2009, Digital print on canvas, 80 x 107 cm, Unique

Conrad Ventur, Whatever Happened to Baby Jane?, 2009, Digital print on canvas, 80 x 107 cm, Unique





Conrad Ventur, Words of Love, 2009, Digital print on canvas, 80 x 107 cm, Unique